

Rat Monoclonal anti-Mouse LYVE-1

ORDERING INFORMATION

Catalog No:	mAP-0033
Size:	100 µg
Storage:	< -20° C
Immunogen:	Mouse recombinant LYVE-1
Ig Type:	Rat IgG2
Clone:	RM0033-4D17
Applications:	Western blot & Immunohistochemistry

Preparation: Produced from a hybridoma fused by a mouse myeloma with B cells obtained from a rat immunized with mouse LYVE-1 recombinant protein. The IgG fraction of the tissue culture supernatant was purified by Protein G.

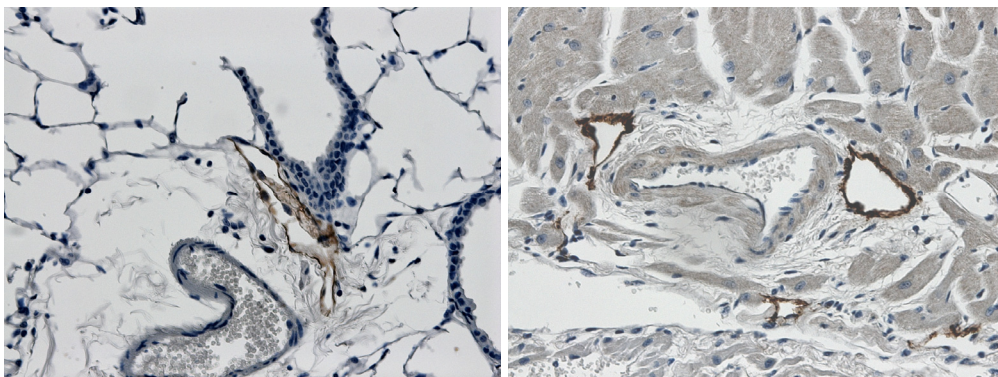
Formulation and Storage: The IgG fraction of culture supernatant was purified by Protein G affinity chromatography and lyophilized from a 0.2 µm filtered solution in phosphate-buffered saline (PBS). Lyophilized samples are stable for 2 years from date of receipt when stored at -70°C.

Reconstitution: Reconstitute the antibody with 500 µl sterile PBS and the final concentration is 200µg/ml. Reconstituted antibody can be aliquoted and stored frozen at < -20 for at least for six months without detectable loss of activity. **Avoid repeated freeze-thaw cycles.**

Specificity: This antibody recognizes mouse LYVE-1 in western blot. Reactivity to LYVE-1 of other species is not tested.

Applications:

- | | | | |
|----|-----------------------------|------------|---------------------|
| 1. | Western blotting: | Yes | (1:500-1000) |
| 2. | Immunohistochemistry | Yes | (1:50-200) |



4% PFA fixed and paraffin embedded mouse Lung and Heart tissue section was subjected to IHC staining of mouse LYVE-1 using mAP-0033.

The listed dilutions are for recommendation only and the final conditions should be optimized by the ender users!

Contact & Ordering Information: Angio-Proteomie, 11 Park Drive, Suite 12, Boston, MA 02215, USA. Tel: 001-6175492665; Fax: 001-4802474337, angioproteomie@gmail.com